



CLINICIAN'S GUIDE TO CO-AXIS FULL ARCH

POWERED BY SYNERGY SURGICAL SOLUTIONS
EXCLUSIVELY FOR SOUTHERN IMPLANTS



Utilizing CHROME GuidedSMILE Pat. #11,173,016 and #11,576,755

Dear Doctor,

Over the last decade the dental industry has experienced a true evolution in the technologies and techniques available to help make the All-on-X hybrid restorative concept more predictable. One of those truly unique advancements is the revolutionary Co-Axis implant system, offered by Southern Implants.

This unique implant system is enhancing the way the surgical and restorative teams treat today's edentulous patient. The NavaGation Precision Guidance team has joined forces with Southern Implants to provide today's surgeon with the resources to use this innovative implant system in a fully guided approach.

Because of the uniqueness of the implant design, traditional guided solutions have struggled to produce an accurate Co-Axis specific guided procedure.

Furthermore, the Synergy Co-Axis collaboration is not only focused on an accurate implant placement guide but also on creating a predictable restorative result. This restorative workflow is created by the accuracy of the surgical conversion which is based off the diagnostic design. This device ultimately becomes the initial data point in the restorative process.

The Synergy system's focus is to bring the restorative, surgical and technical teams together to improve patient outcomes.

Our motto is: "It's not just a surgery... it's a smile Synergy!™"

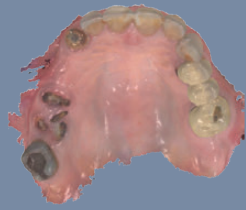
Conrad J. Rensburg



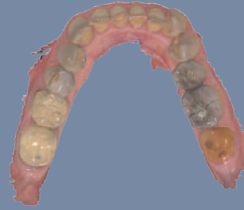
 **S**
SOUTHERNIMPLANTS®

Required Records

Dentate Scans



UPPER WITH FULL PALATE

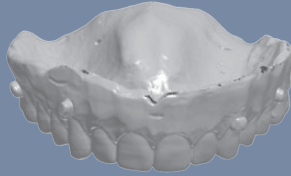


LOWER

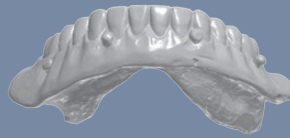


BITE SCAN

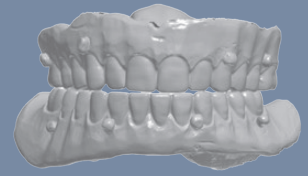
Edentulous Scans



UPPER DENTURE WITH INTAGLIO



LOWER DENTURE WITH INTAGLIO



DENTURE BITE SCAN

Required Patient Photos



FULL FACE



FULL SMILE CLOSE-UP



RETRACTED LIPS



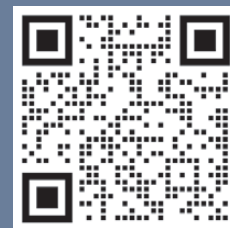
RELAXED LIP CLOSE-UP



SIDE PROFILE

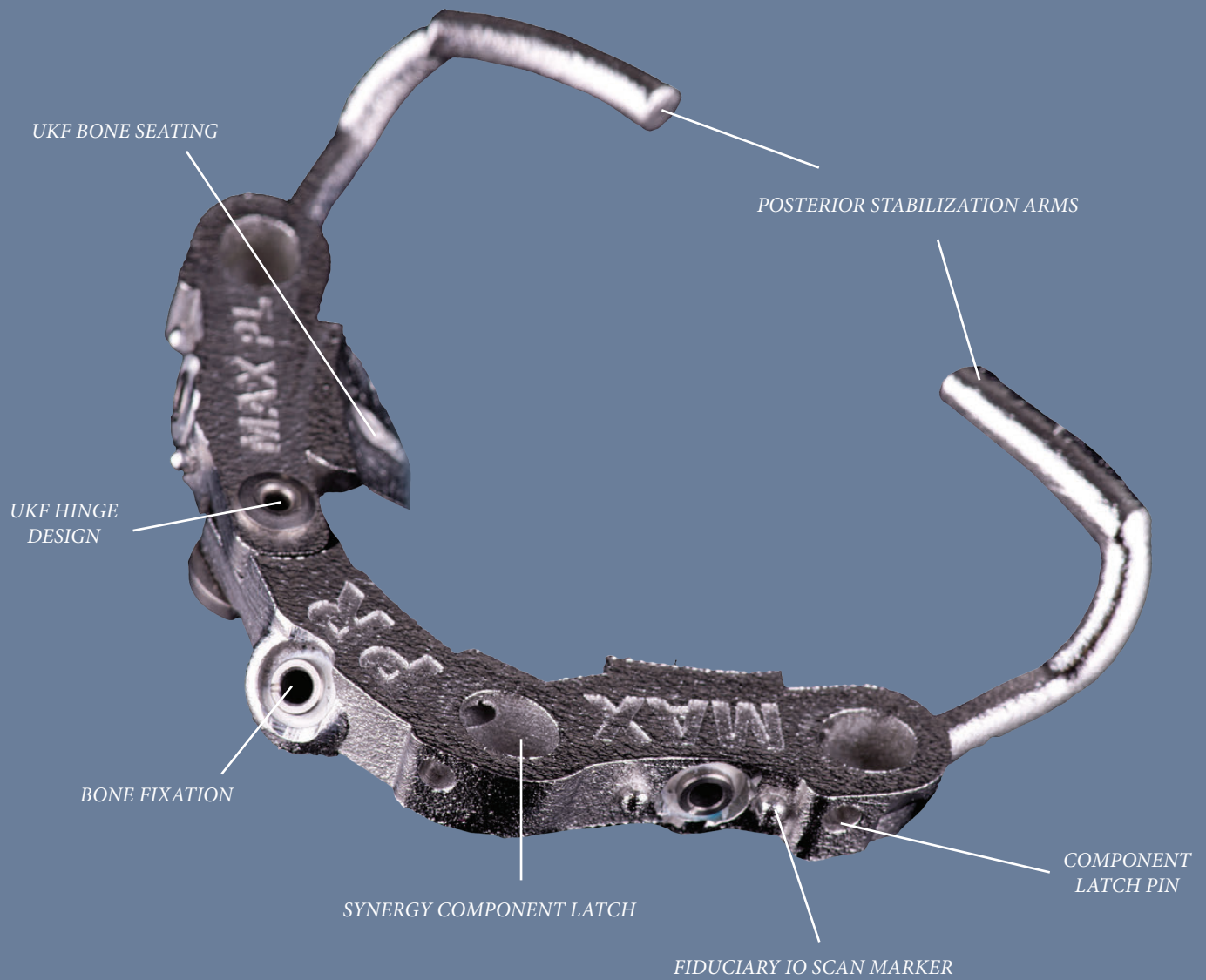


CBCT SCAN OUT OF OCCLUSION



SUBMIT A CASE THROUGH YOUR SOUTHERN IMPLANTS TEAM

Navigation Synergy - Base Guide Design





*Case by Christian Yaste DDS
and Absolute ART Team*

*"... I understand that
patients are not coming to
me to have implants, they
are coming to me to replace
missing TEETH."
- Scott Ganz*



Co-Axis Protocol - Seating the Base Guide



PRE-OP



VERIFY PASSIVE TOOTH ALIGNER SEATING BEFORE SURGERY



PRE EXTRACTIONS TO ACCOMMODATE FIXATION POSITIONS



TISSUE REFLECTION - BUCCAL ONLY



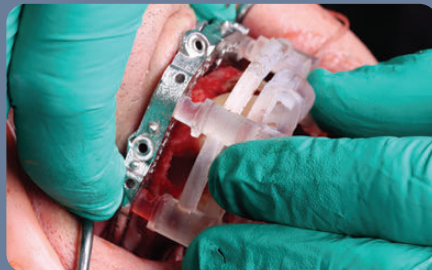
COLLAPSIBLE HINGE GUIDE - SIMPLE AND ACCURATE SEATING



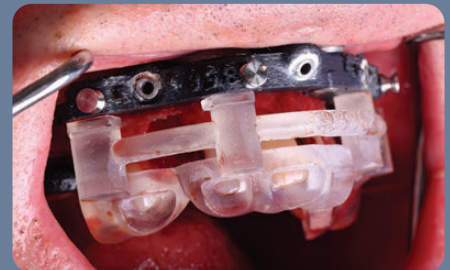
UKF HINGE GUIDE ENGAGING THE BUCCAL UNDERCUT



UKF SEATING VERIFIED ON BUCCAL UNDERCUT



TOOTH ALIGNER ENGAGED FOR DUAL SEATING VERIFICATION



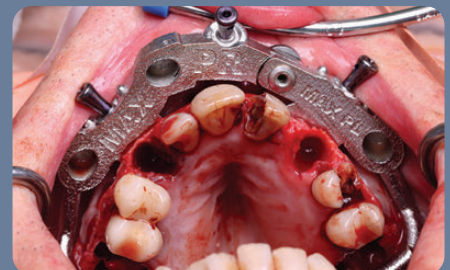
TOOTH ALIGNER & BASE GUIDE STACK READY FOR FIXATION



ACCURATE FIXATION BECAUSE OF DUAL SEATING VERIFICATION INTO THE UNDERCUT



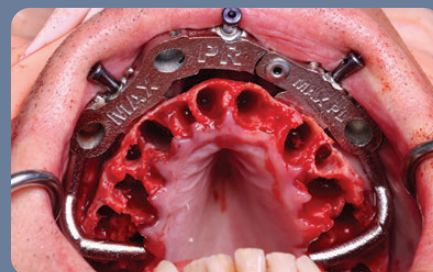
EFFICIENT BONE FIXATION PROCESS



ACCURATE BASE GUIDE SEATING

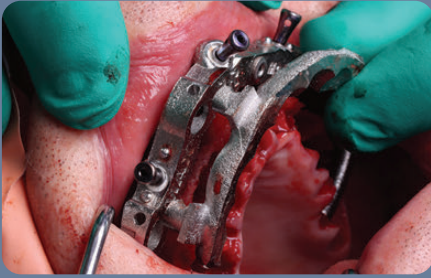


READY FOR SURGERY

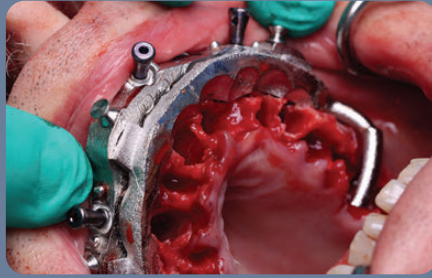


TOOTH EXTRACTIONS

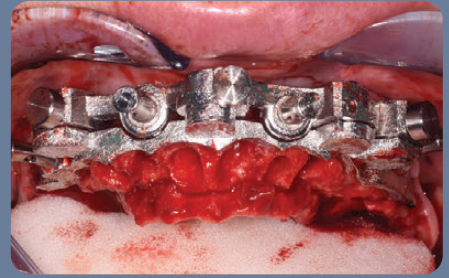
Bone Plane Reference Options: FP1 Scalloped Bone Plane



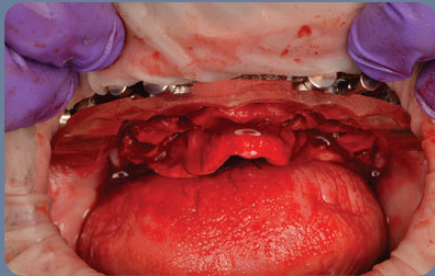
SEATING SCALLOPED BONE PLANE REFERENCE



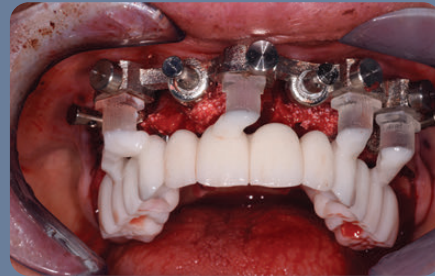
FP1 STYLE SCALLOPED BONE PLANE REFERENCE



SCALLOPING BONE REFERENCE GUIDE



SCALLOPED BONE REDUCTION

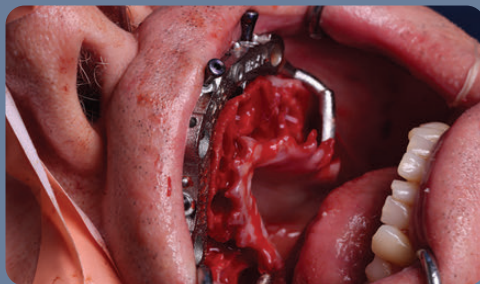


FP1 SCALLOPED CONVERSION

Bone Plane Reference Options: FP2 & 3 Flat Bone Plane



FP2 & 3 FLAT BONE PLANE REFERENCE



FLAT BONE PLANE



Dr. Jeffrey Ganeles



LATCHED CONVERSION

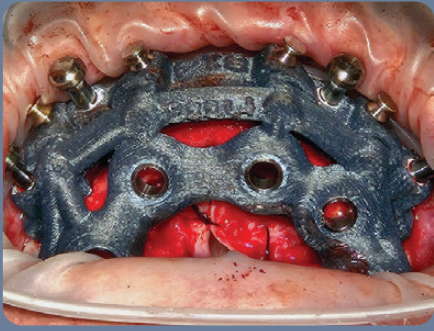


FP3 STYLE SURGICAL CONVERSION

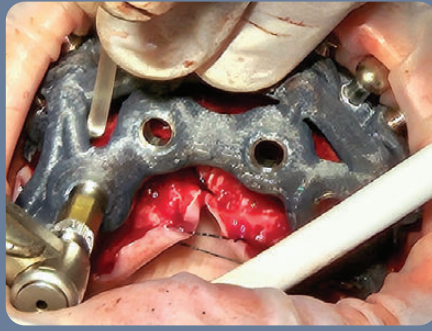


SURGICAL CONVERSION

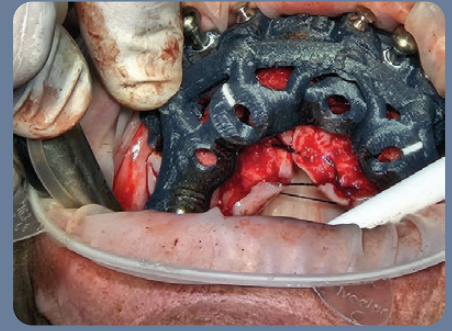
Co-Axis Surgery Phase



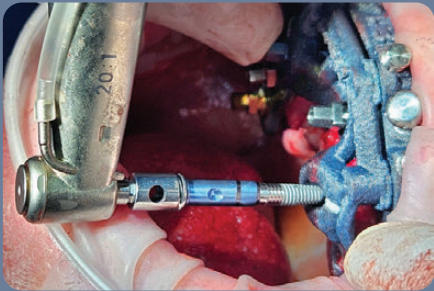
SEAT CARBON FIBER OSSEOTOMY GUIDE FOR SOUTHERN IMPLANT SYSTEMS AND LATCH IN PLACE TO THE FOUNDATION



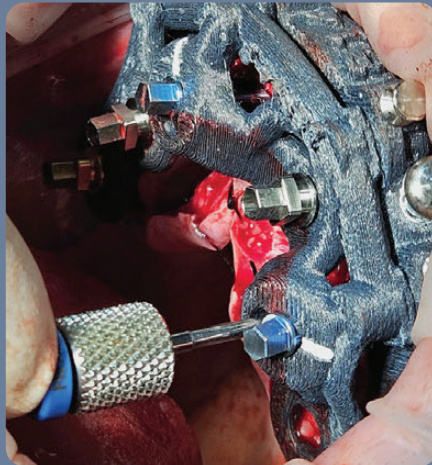
DRILL OSSEOTOMIES. ONCE COMPLETED, REMOVE OSSEOTOMY GUIDE FROM MOUTH



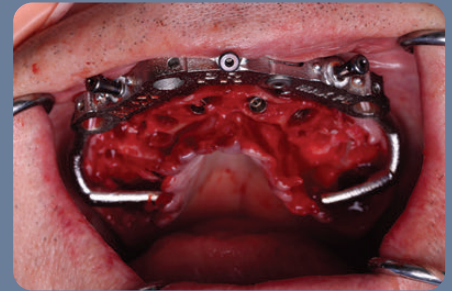
SEAT IMPLANT PLACEMENT GUIDE AND LATCH INTO POSITION TO THE FOUNDATION



PLACE IMPLANTS AND TIME ANY COAXIS IMPLANTS WITH DIMPLE OF MOUNT TO WHITE LINE ON GUIDE
NOTE THAT IMPLANTS ARE DEPTH CONTROLLED



REMOVE IMPLANT MOUNTS. ADDITIONAL DRIVER ACCESS PROVIDED FOR REMOVAL OF COAXIS IMPLANT MOUNTS.



IMPLANTS PLACED



Surgery and clinical pictures by Dr Michael Tang

Synergy Abutment Placement



MUA ABUTMENT ALIGNER

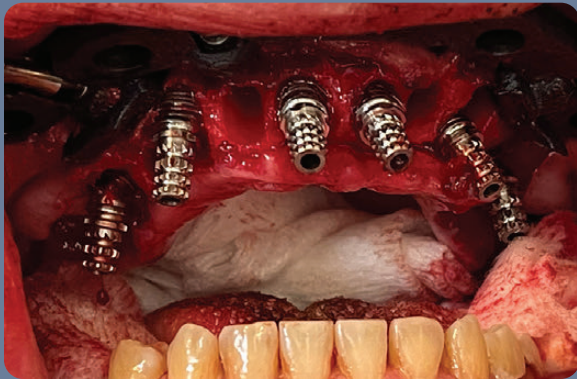


LINE SHOWS ALIGNMENT WITH SCREW DRIVER SHAFT



MUA ABUTMENTS IN PLANNED ROTATION

Synergy Conversion Process



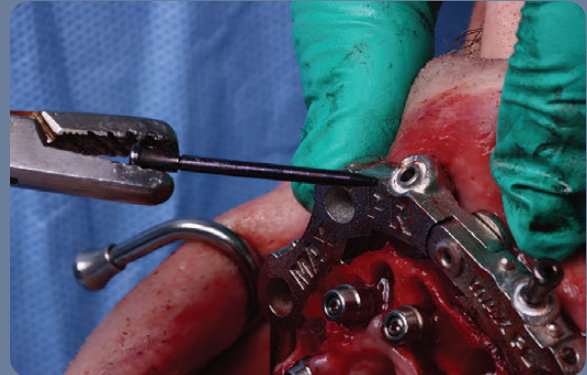
*UNLATCH AND REMOVE PMMA - PLACE
TEMPORARY COMPONENTS AS PER THE
CONVERSION SEQUENCE*



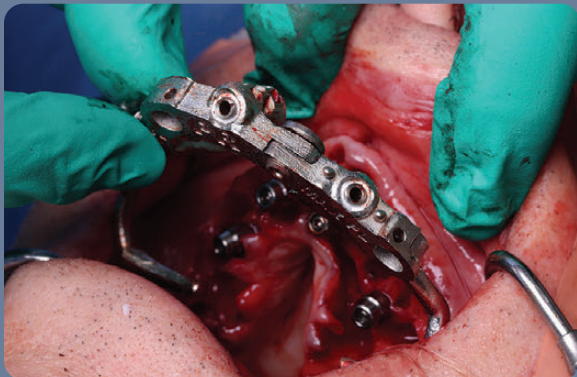
LUTE COMPONENTS INSIDE THE PMMA



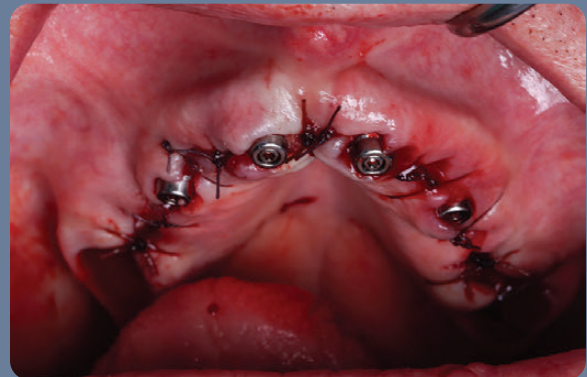
UNLATCH THE PMMA AND FILL IN THE INTAGLIO



REMOVE FIXATION PINS



REMOVE SYNERGY BASE GUIDE



SUTURE PATIENT



*Conversion by
Christian Yaste DDS*



Case by Mark Ludlow DDS



Case by Christian Yaste DDS



Case by Mark Scurria DDS



Case with Grad Pros Clinic UIC

Absolute perfection is not optional!



Absolute Dental Lab

Established in 1994, Absolute Dental Services started as a small fixed prosthetics lab in the Triangle area of North Carolina. More than two decades later, Absolute's restorative focus is much broader but their attention to product detail and exceptional customer service has not changed. In 2019, Absolute Dental was voted NADL laboratory of the year by their peers.

Absolute is a true full-service partner, with a team nationally and internationally renowned for their expertise in creating world-class esthetics. Their use of cutting-edge technology in CAD and milling as well as their extraordinary dental implant, guided surgery and high-end removables teams, enables them to deliver lifelike and functional dental prosthetics in even the most complex cases.

Serving their customers with Absolute Excellence has always been the primary focus of the Absolute team. Their vision and dedication is reflected in the company motto, *Perfection Is Not Optional!*

They welcome clinicians from all over the country to become part of the Absolute family!



NavaGation Precision Guidance® team

The NavaGation Precision Guidance® division was established in 2014 with the goal to create synergy between the surgeon, restorative and technical teams. Today with more than 20,000 successful surgeries behind them, the NavaGation and Absolute teams are proud to offer their expertise in diagnostic work-up, pre-planning, guide design, processing and chairside support to our clinicians.

By offering a true “prosthetic down” planning approach, our NavaGation Precision Guidance® team has become a trusted partner for surgical and restorative teams across the United States. Advancements in planning software, FDM 3D printing of materials like implantable PEEK Carbon Fiber combined with other technologies like select laser melting, has created a true synergy between the surgical plan and the final prosthetics. Having an experienced technician assist with plan set-up, team review and fabrication of the final prosthesis has proven to create a very predictable workflow.

Select Laser Melting
done exclusively by



We invite you to restore your next case with us!





*Artistry by
Chris Barwacz and
Jack Marrano*



1-844-NAVAGAT (628-2428)
1-844-293-ADS1 (2371)

Utilizing CHROME GuidedSMILE Pat. #11,173,016 and #11,576,755